

[illegible]

NOTHING RUNS COOLER



DMSB6-600 2SL

DUAL MOUNT, REVERSIBLE TRANSFORMER CONNECTORS

Versatile, Reversible Design

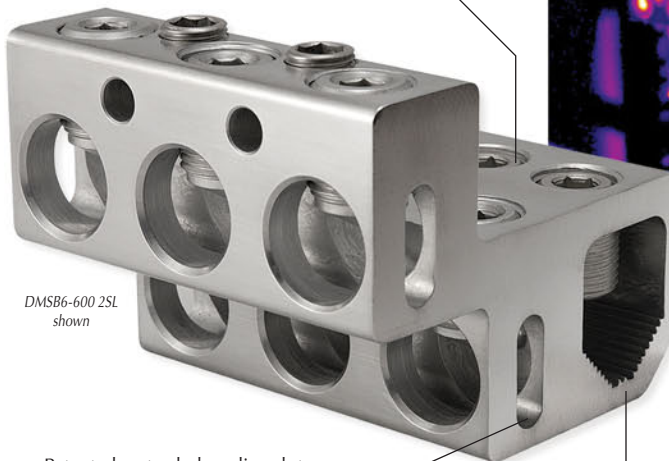
- Left- or right-hand mounting from either end, both 350 or 600 size completely reversible
- 600 size fits both 1" and 5/8" stud diameters
- 350 size fits 5/8" stud diameters
- Dual rated for copper and aluminum conductors



UTILCO®

DUAL MOUNT, REVERSIBLE TRANSFORMER CONNECTORS FULLY TESTED TO ANSI C119.6 CLASS A

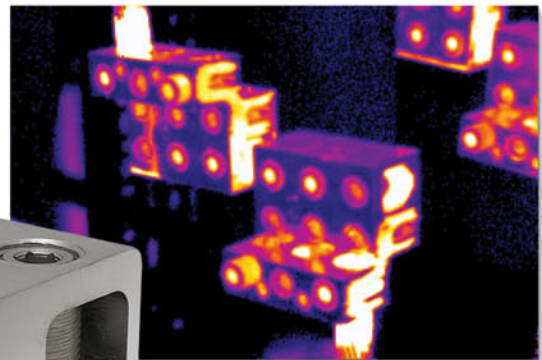
Two set screws secure the connector to the transformer stud and reduces cantilever effect



DMSB6-600 2SL
shown

Patented, extruded cooling slots dissipate heat and lock conductor in side grooves for superior short circuit pull out resistance

Oxidation piercing grooves improve contact between stud and connector



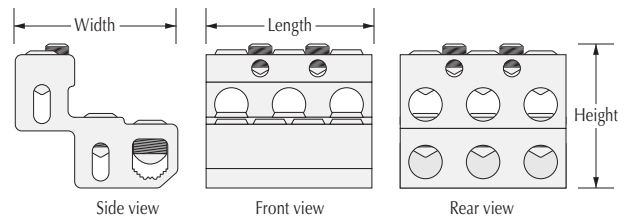
No other connector of its kind runs cooler

Versatile Features for Faster, Easier Installation

- Two street lighting holes standard
- Shorter and more compact design allows for easier access on smallest stud spacings
- 6 and 8 port versions
- Dual rated and range taking for aluminum and copper conductors



DMSB6-350 2SL
shown



TYPE DMSB DUAL MOUNT CONNECTORS

Catalog Number	Number of Ports	Number of Streetlight Ports	Wire Range		Dimensions (in.)			Wrench Size		Stud Size
			Main	Streetlight	Width	Length	Height	Main	Streetlight	
DMSB6-350 2SL	6	2	350kcmil-10	1/0-14	3.120	3.400	2.600	5/16	5/16	5/8
DMSB8-350 2SL	8	2	350kcmil-10	1/0-14	3.120	4.600	2.600	5/16	5/16	5/8
DMSB6-600 2SL	6	2	600kcmil-2	1/0-14	3.612	3.875	2.937	5/16	5/16	5/8 - 1
DMSB8-600 2SL	8	2	600kcmil-2	1/0-14	3.612	5.125	2.937	5/16	5/16	5/8 - 1

Add a "P" to the end of the catalog number when ordering to be pre-filled with DE-OX® antioxidant.
Additional port designs available, consult factory. Covers available, contact factory.

UTILCO
A DIVISION OF **ILSCO**®

UTILCO • 4730 Madison Road, Cincinnati, Ohio 45227, U.S.A. • Phone: (800) 776-9775, (513) 533-6200
Fax: (513) 871-4084 • E-mail: sales@ilsco.com, Web site: www.utilco.com

ILSCO of Canada Company • 1050 Lakeshore Rd. East, Mississauga, Ontario, L5E 1E4 • Phone: (905) 274-2341, Fax: (905) 274-8763